



PRINCE[®]

PIPING SYSTEMS



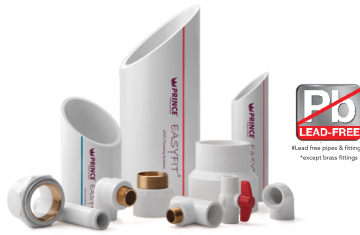
ZERO DEFECT CHOICE



FLOWGUARD[®] PLUS

CPVC PLUMBING SYSTEMS[™]

Product Range:
Pipes: 15 to 250mm (1/2" to 10")
Fittings: 15 to 150mm (1/2" to 6")



EASYFIT[®]

UPVC Plumbing Systems

Product Range:
Pipes: 15 to 250mm (1/2" to 10")
Fittings: 15 to 150mm (1/2" to 6")



EASYFIT RE[®]

Reclaim Piping Systems

Product Range:
Pipes: 15 to 250mm (1/2" to 10")
Fittings: 15 to 150mm (1/2" to 6")



EASYFIT in[®]

UPVC Industrial Piping Systems

Product Range:
Pipes: 15 to 300mm (1/2" to 12")
Fittings: 15 to 300mm (1/2" to 12")



GREENFIT[®]

PP-R Plumbing Systems

Product Range:
Pipes: 20mm to 315mm
Fittings: 20 to 160mm | Coil Pipe: 20, 25, 32mm
Submersible Delivery Pipe: 90 & 110mm



ULTRAFIT[®]

SWR Piping Systems

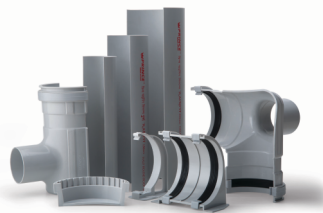
Product Range:
Pipes: RR (Type A & B): 75 to 160 mm
SJ (Type A & B) : 40 to 200 mm
Fittings: RR: 75, 90, 110, 160mm
SJ: 40 to 160 mm



SILENTFIT[®]

Low Noise SWR Systems

Product Range:
Pipes: RR: 75, 110, 160mm
SJ: 40, 50, 63, 75, 110, 160mm
Fittings: RR: 75, 110 & 160mm
SJ: 40, 50, 63, 75, 110, 160mm



RAINFIT[®]

Roofwater Systems

Product Range:
Pipes: Half Round Pipes: 140, 180, 250mm
Down take Pipes: 75, 110mm
Fittings: 75, 110, 140, 160, 180, 250mm



FOAMFIT[®]

Underground Drainage Piping Systems

Product Range:
Pipes: 110, 160, 200, 250, 315mm
Fittings: 110, 160, 200mm



DRAINFIT™

UPVC Underground
Drainage Piping Systems

Product Range:

Pipes: 110 to 400 mm
Fittings: 110 & 160 mm



Now comes
with **7 types**
of Variants

DRAINFIT™

Inspection Chamber

Product Range:
315 X 110mm



CORFIT®

Underground Double Wall
Corrugated Pipes

Product Range:

Pipes: 100 to 1000mm
Fittings: 100 to 500mm



CABLEFIT™

CABLE DUCTING PIPES

Product Range:

Pipes: 50 to 160mm
Fittings: 50mm



AQUAFIT®

Agriculture Piping Systems

Product Range:

Pipes: 20 to 400mm
Fittings: 20 to 250mm
Fabricated Fittings: 20 to 400mm

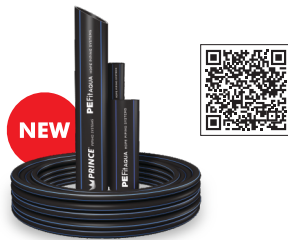


SAFELIT®

Borewell Systems

Product Range:

Screen Pipes: 40 to 250mm
Casing Pipes: 32 to 250mm
Rising Main Pipes: 25 to 100mm
Bell Form Pipes - V4: 25, 32, 40mm



PEFitAQUA™

HDPE PIPING SYSTEMS

Product Range:

Pipes: 20 to 315mm



STOREFIT™

Paani Ka Bank

Product Range:

500, 750, 1000, 1500, 2000,
3000, 5000 & 10,000 Litres

*T & C Apply



DURAFIT™

FRP Manhole & Chamber Covers

Product Range:

- **Chamber Cover:**
 - Circular: 315 mm
- Square: 10 X 10, 12 X 12, 18 X 18 inch
- Rectangular: 18 X 24 inch
- Gully Cover: 600mm
- **Manhole Covers:**
 - Circular: 530, 600 & 900mm
- Square: 300, 450, 600, 900, 1000, 1200mm
- Rectangular: 600 X 450, 900 X 450, 900 X 600 & 1200 X 900mm



EZWELD®

One-step CPVC Cement Medium Body/Yellow

Tin: 59 to 946ml | **Tube:** 29.5 & 59ml

Easyfit UPVC Solvent Cement:

Tin: 59 to 946ml | **Tube:** 10, 29.5 & 59ml
Solvent Cement (Heavy) - Tin: 59 to 946 ml

Superfit PVC Solvent Cement:

Tin: 50 to 1000ml | **Tube:** 25, 50 & 100 ml
Can: 5 ltr | **Bottle:** 25 to 1000ml

PRINCE PIPES AND FITTINGS LIMITED



Scan QR Code for
visit our website



Prince Piping Systems
GeM Seller Id: KZGC210004401955



Dealer Stamp